



VoiceGear/Talkswitch Integration Guide– Ver.0.2

1. OVERVIEW	3
1.1 SETTING UP TALKSWITCH PBX	4
1.2 SETTING UP VOICEGEAR SKYBRIDGE	5
2. VOICEGEAR-TALKSWITCH SIP INTEGRATION.....	6
2.1 TALKSWITCH VS CONFIGURATION	7
2.2 VOICEGEAR SKYBRIDGE CONFIGURATION	10

1. Overview

This document presents a complete guide for integrating VoiceGear SkyBridge Skype gateways with Talkswitch VS phone systems running version 6.10 of Talkswitch configuration software. The document assumes reader familiarity with both VoiceGear SkyBridge and Talkswitch VS. For more details on VoiceGear SkyBridge configuration, please refer to the VoiceGear SkyBridge user guide available on www.industrydynamics.ca.

1.1 Setting up Talkswitch PBX

To get started with your Talkswitch PBX please follow steps outlined below.

1. Power up the PBX and make sure it is connected to the same LAN as VoiceGear SkyBridge. Make sure there is no firewall between the two systems
2. Install the Talkswitch configuration software on any computer connected to the same LAN as VoiceGear SkyBridge and Talkswitch VS
3. Run the Talkswitch configuration software and select “Configure Auto-detected Talkswitch System” option
4. Make sure the Talkswitch system has an assigned static IP by navigating to the “Global settings->IP configuration” screen via the configuration menu
5. Set the VoIP Configuration and add a VoIP number to enable the system to talk to VoiceGear SkyBridge. For more information, please refer to section 2.1

1.2 Setting up VoiceGear SkyBridge

To get started with VoiceGear SkyBridge please follow steps outlined below.

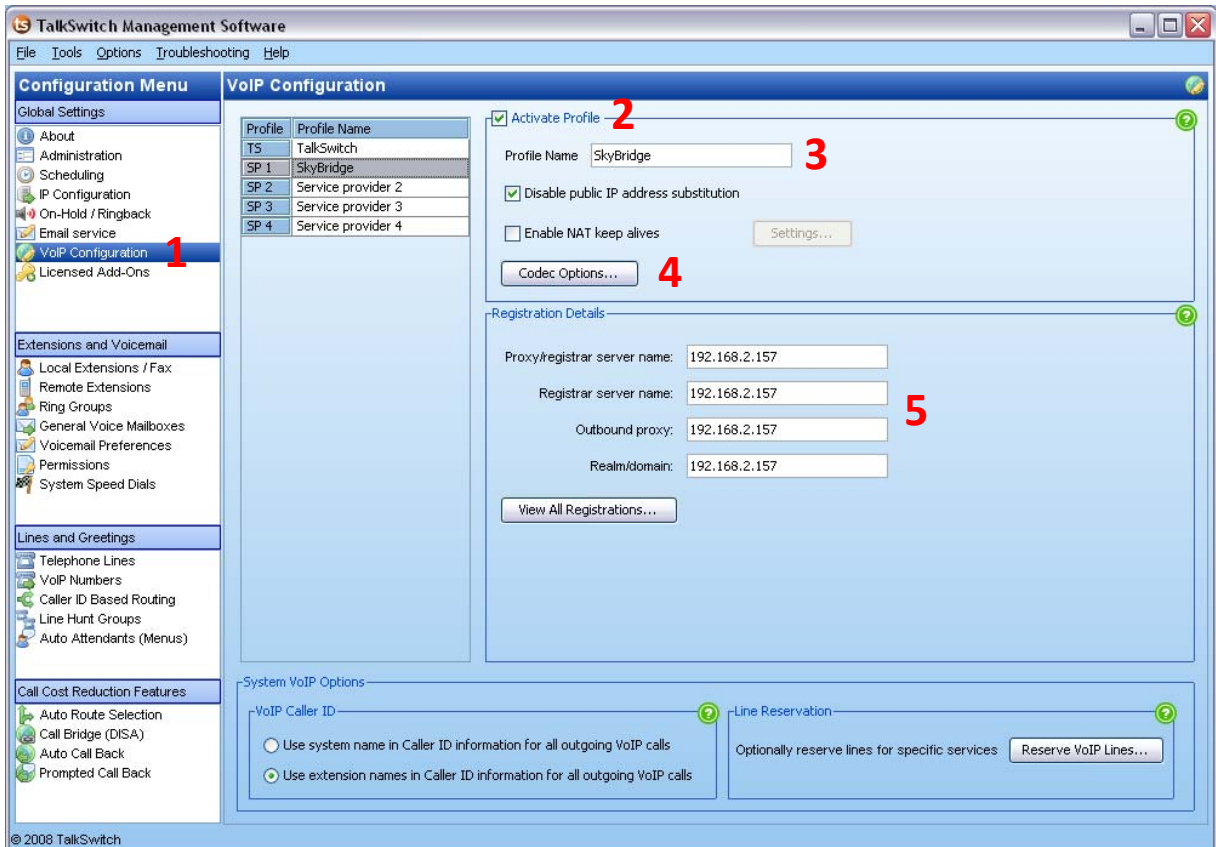
1. Connect the supplied power brick and network cable to your new VoiceGear SkyBridge gateway
2. Connect monitor and keyboard to the gateway and use username: root, password: vgcroot123 credentials to access the administration console. Using the console, configure networking settings and set a static IP for the gateway
3. Open the VoiceGear SkyBridge web configuration interface in a web browser using the static IP you have assigned and TCP port 8080. For example, if the static IP assigned is 10.3.1.1, point your browser to <http://10.3.1.1:8080>
4. Once the web configuration interface has been loaded, please login with the following credentials: username: admin, password: admin
5. Once logged in, register at least one valid Skype account with the gateway via the “Skype-> Accounts->Add New” page
6. Please refer to section 2.2 for more details on setting up a SIP trunk to enable VoiceGear SkyBridge to communicate with a Talkswitch PBX

2. VoiceGear-Talkswitch SIP Integration

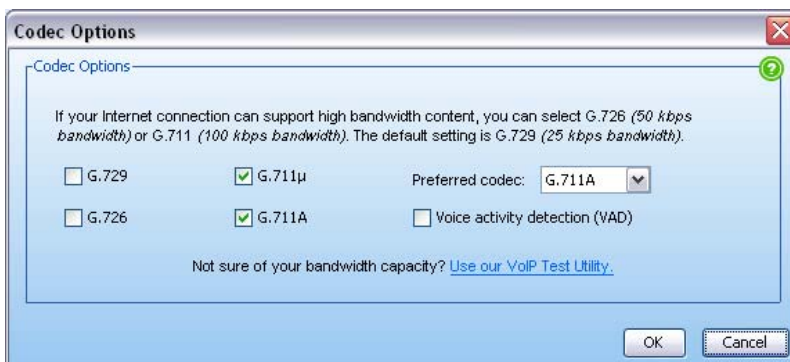
The main purpose of this section is to outline both VoiceGear SkyBridge and Talkswitch VS configuration to enable integration of both systems via SIP protocol.

2.1 Talkswitch VS Configuration

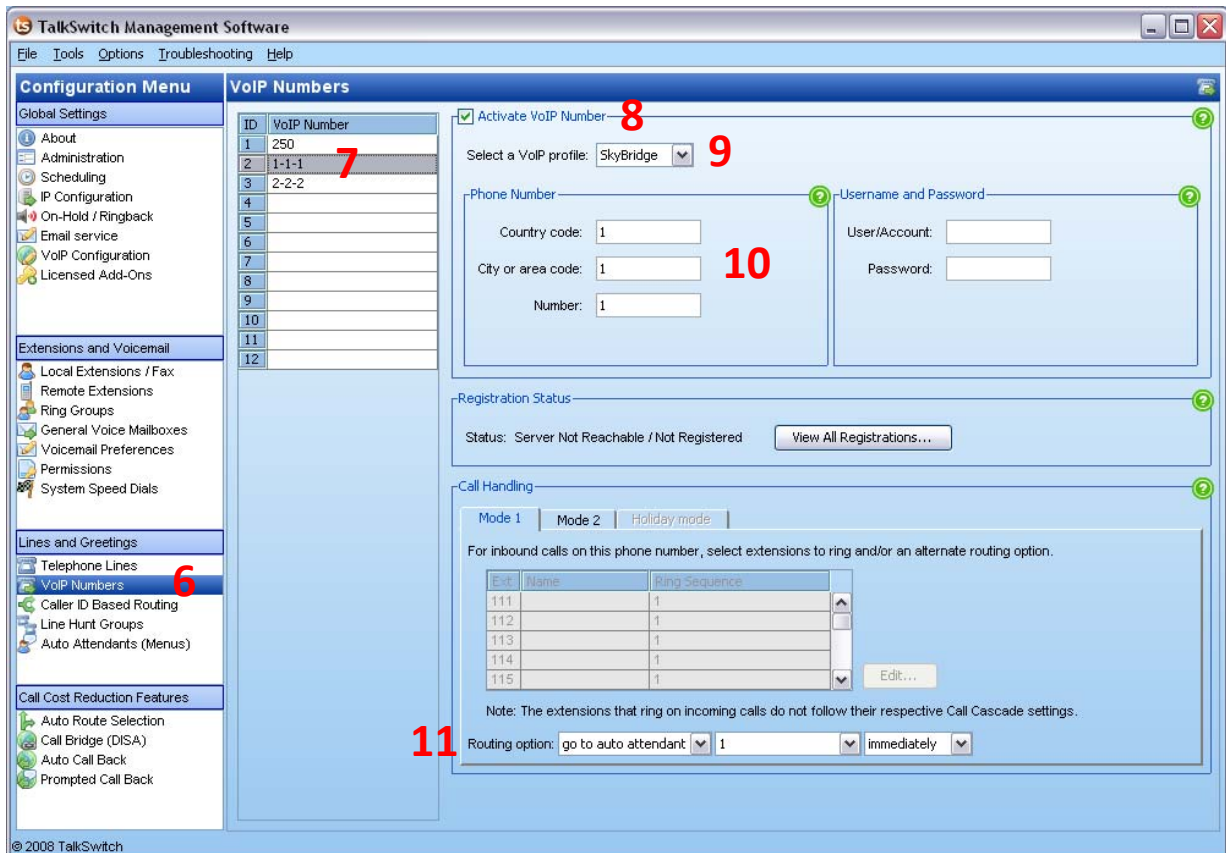
1. Navigate to the “Global settings->VoIP configuration” screen via the configuration menu of the Talkswitch configuration software



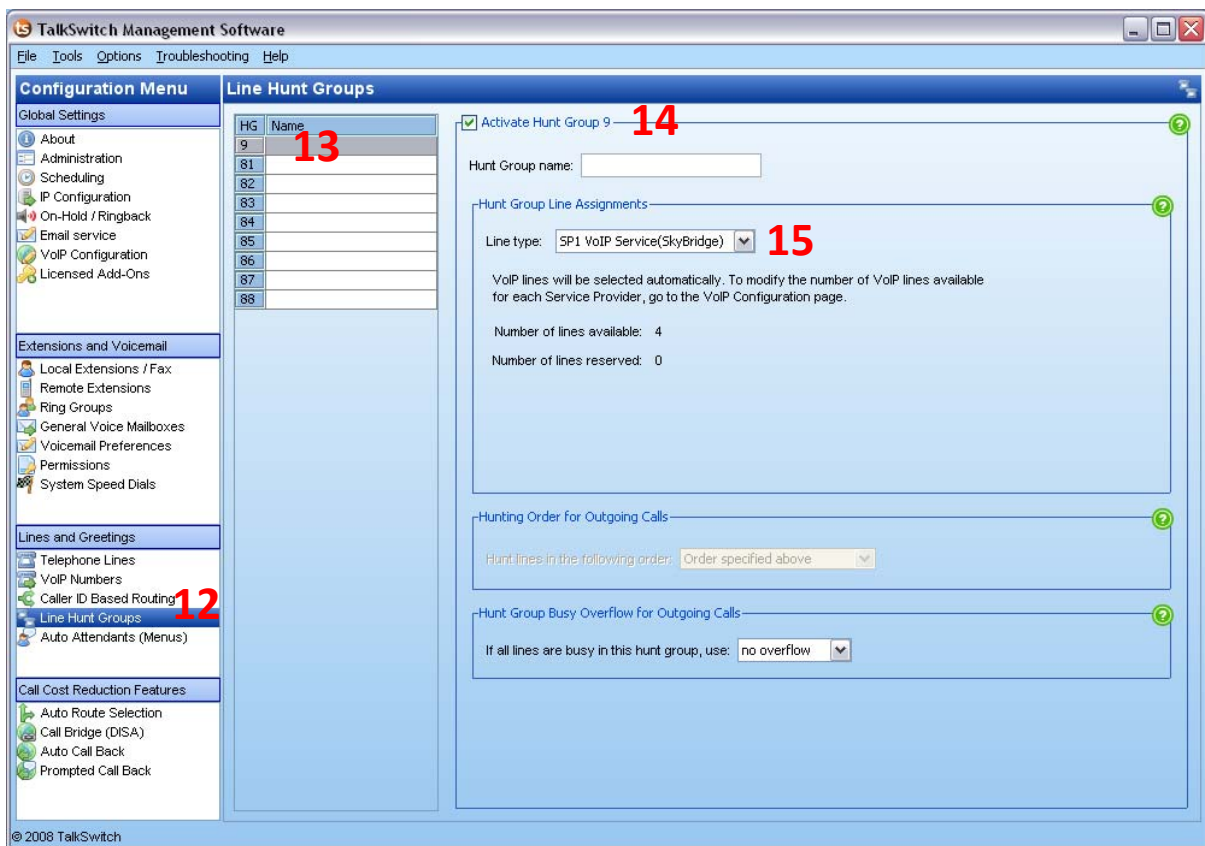
2. Click on the SP1 Profile provided it is not already taken and enable the “Activate Profile” checkbox
3. Enter “SkyBridge” as the profile name
4. Click on “Codec options” button and make sure only G.711A and G.711U codecs are selected and VAD is turned off



5. Under “Registration details”, enter the static IP assigned to VoiceGear SkyBridge gateway for “Proxy/registrar server name”, “Registrar server name”, “Outbound proxy”, and “Realm/domain”
6. Navigate to the “Lines and Greetings->VoIP numbers” screen via the configuration menu of the Talkswitch configuration software



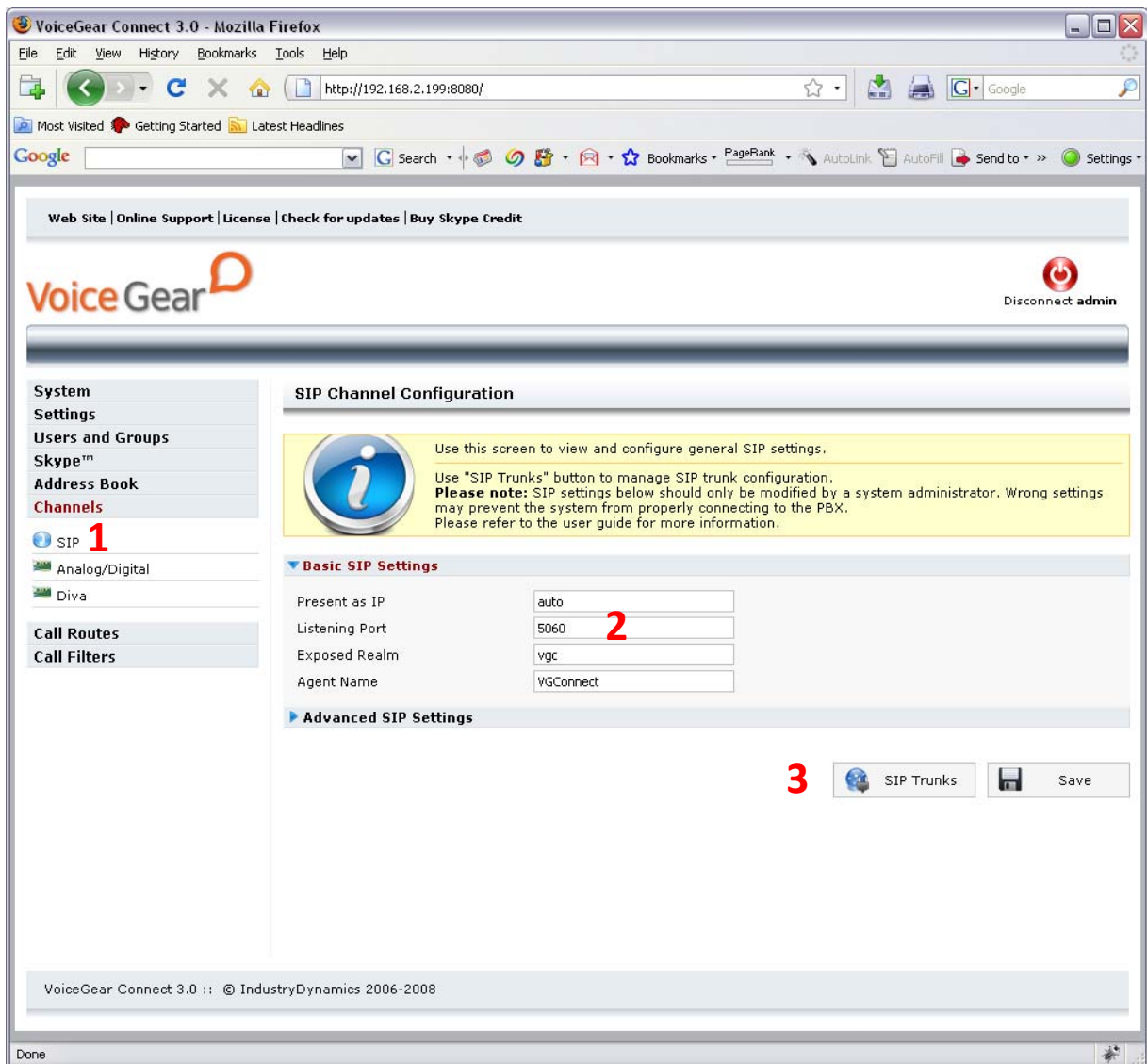
7. Select an empty VoIP number entry
8. Select the “Activate VoIP number” checkbox
9. Pick the “SkyBridge” profile defined earlier for the “Select a VoIP profile” pick list
10. Under phone number settings, enter 1 for “Country code”, “City or area”, and “Number” boxes
11. Under “Call handling”, select the routing option to “go to auto attendant 1”. This will make sure all your incoming Skype calls are routed to the first auto attendant. Depending on your configuration, this could be set to ring an extension or a ring group
12. Navigate to the “Lines and Greetings->Line Hunt Groups” screen via the configuration menu of the Talkswitch configuration software



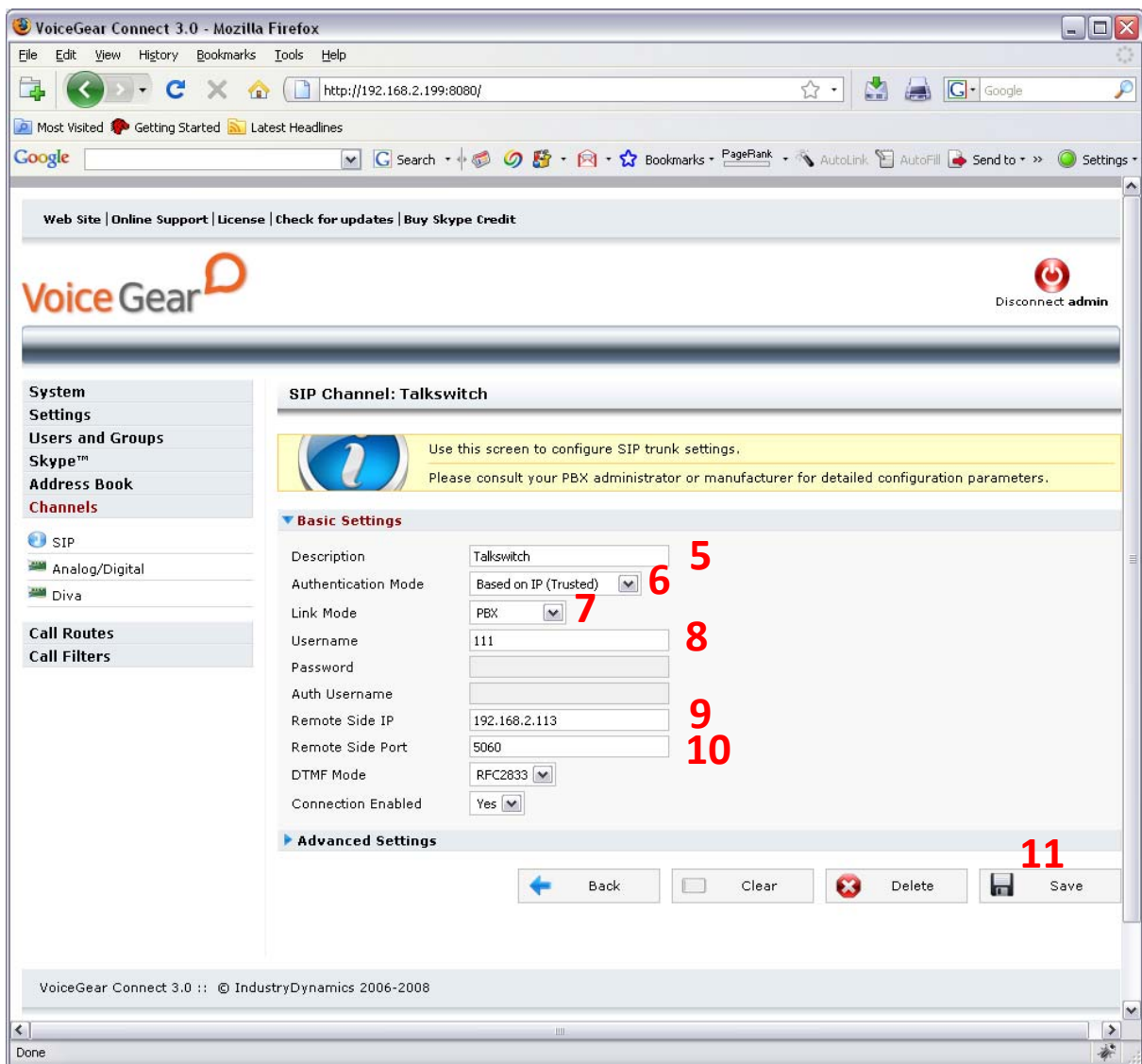
13. Select hunt group 9
14. Select the “Activate hunt group 9” checkbox and enter a meaningful name for the hunt group
15. Under “Hunt group assignments”, select the following line type: “SP1 VoIP Service (SkyBridge)”
16. Select “File->Save” to save your configuration changes

2.2 VoiceGear SkyBridge Configuration

1. Navigate to the “Channels->SIP” screen via the main menu of the VoiceGear web configuration interface



2. Make sure “listening port” is set to 5060
3. Click on the “SIP trunks” button to start the configuration of a SIP trunk that will communicate with Talkswitch PBX
4. Under the SIP trunks page that opens, click on the “Add new” button to start adding a new trunk



5. Under “Basic settings”, set the Description to Talkswitch to help future identification of this SIP trunk
6. Select the “Authentication mode” to be “Based on IP (trusted)”
7. Select the link mode to be “PBX”, this will tell VoiceGear SkyBridge that it is communicating with a PBX as opposed to an individual user
8. Set the “Username” to be 111. Please note that this must match the number combination set in the Talkswitch configuration for a VoIP phone number. For example, if a phone number defined on the Talkswitch side has 1 set for “Country code”, “City or area”, and “Number”, the “Username” setting here has to be set to “111”
9. Set the “Remote Side IP” to the static IP configured for the Talkswitch PBX
10. Set the “Remote Side Port” to 5060

- Click on the “Save” button to save your changes. Once clicked, an “Apply settings” dialog will come up. Please click on “Apply now” button to apply your settings

The screenshot displays the configuration interface for a SIP Channel named 'Talkswitch'. At the top, a blue notification bar states: 'Modifications need to be applied, please click on the "Apply Now" button.' with an 'Apply Now' button. Below this, a yellow informational bar reads: 'Use this screen to configure SIP trunk settings. Please consult your PBX administrator or manufacturer for detailed configuration parameters.' A green success message bar says: 'Successfully saved'. The main configuration area is divided into 'Basic Settings' and 'Advanced Settings'. The 'Basic Settings' section includes the following fields:

Description	Talkswitch
Authentication Mode	Based on IP (Trusted)
Link Mode	PBX
Username	111
Password	
Auth Username	
Remote Side IP	192.168.2.113
Remote Side Port	5060
DTMF Mode	RFC2833
Connection Enabled	Yes

- Navigate to the “Channels -> Call Routes -> Inbound Routes” screen via the main menu of the VoiceGear web configuration interface and click on “Incoming Calls Any/Any” route
- In the subsequent screen, remove the existing destination by clicking on the “X” button to the right of it and add a new destination by selecting SIP PBX trunk identified with “Talkswitch”. Enter the DID value to be 111. In general, this value should always be identical to the username defined in step 8
- Click “Add” followed by “Save” to apply your changes
- To try a test call from any extension connected to the Talkswitch PBX, please dial “9123”. This will route you to the Skype call testing center
- If Skype account registered with the gateway has SkypeOut credits, you can try dialing a landline though Skype by entering “94168481850” from any extension. This will access IndustryDynamics head office.